

ROUSSILLON SIMULATION

PRESENTE

RAS RAILWORKS SCENARIOS VOL.8

THE HORSESHOE CURVE

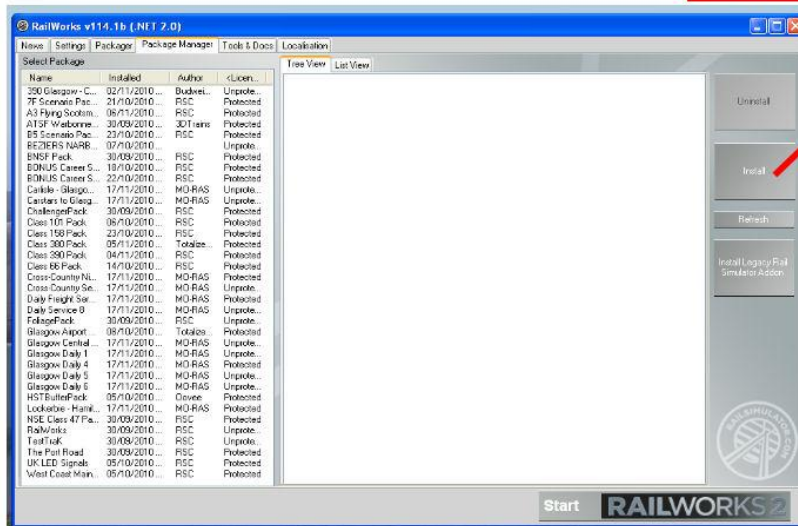


Install

- Create a file on your hard drive call "Railworks Add-on Vol.8" for example.
- Unzip all the .RWP files in the file which you have just created.
- To install the activities open Railworks and click the tab "Package Manager ". You do not have more than to click on the sideline "Install" (see image so below). It will be asked to you the file to install. Go to the file that you have created where all the .RWP are. Install the activities one by one. Once the installations ended, open the tab «Tools and Docs» and click "Clear Cache" to finish the installation.

- A video explaining the installation is available by clicking [here](#).

Utiliser la fonction "Install"
Use the "Install" fonction



Dates and schedules of trains are purely fictitious.

DETAILS OF THE ACTIVITIES

IMPORTANT:

**Respect the speeds limits because all the traffic is settle according to the limitations speeds.
Think of anticipating the accelerations and the braking.
Do not hesitate to use the loco brake.**

-Altoona - Johnstown Express 9803

-Difficulty: Medium

-Duration: 65 minutes

-Train: EMD F7 Pennsy

-Date: 14/07/1957

-Weather: Clear

- Today you have to drive the "Altoona - Johnstown Express Service 01". This is a direct train to Johnstown with no stop. Timetable scenario.
Have a safe journey.

-Johnstown - Altoona Express 9828

-Difficulty: Medium
-Duration: 65 minutes
-Train: EMD F7 Pennsy
-Date: 18/11/1958
-Weather: Overcast Showers
-Today you have to drive the "Johnstown - Altoona Express 9828". This a direct train to Altoona with no stop. Timetable scenario.
Have a safe journey.

- Altoona - Johnstown 9818

-Difficulty: Medium
-Duration: 75 minutes
-Train: EMD F7 Pennsy
-Date: 14/05/1957
-Weather: Clear
-Today you will drive the "Altoona - Johnstown 9818" daily service. Stop at all stations. Timetable scenario.
Have a safe journey.

- Johnstown - Altoona 9796

-Difficulty: Medium
-Duration: 75 minutes
-Train: EMD F7 Pennsy
-Date: 25/10/1958
-Weather: Foggy Rain
-Today you have to drive the "Johnstown - Altoona 9796". This is a daily service with a stop at every station. When you will be at Altoona, you will have to check the junctions an maybe change them manually. Timetable scenario.
Have a safe journey.

-Altoona - Gallitzin - Altoona 9822

-Difficulty: Medium

-Duration: 55 minutes

-Train: EMD F7 Pennsy

-Date: 24/12/1958

-Weather: Foggy Bad Snow

-Christmass is coming. People from Gallitzin needs to come down at Altoona for their last presents. Drive the "Altoona - Gallitzin - Altoona 9822". Timetable scenario.

Have a safe journey.

-Freight 8576

-Difficulty: Easy

-Duration: 75 minutes

-Train: EMD GP7 Pennsy

-Date: 25/07/1958

-Weather: Clear

-Today you have to drive the "Freight 8576" train from Altoona to Johnstown (C Wwd Classification Yard 2). You will only have to drive this train, no coupling or uncoupling have to be done. Think about checking the junctions. If there are not in the good position, change them manually.

Have a safe journey.

-Freight 8506

-Difficulty: Medium

-Duration: 90 minutes

-Train: EMD GP7 Pennsy

-Date: 14/01/1959

-Weather: Foggy Bad snow

-Altoona has to be supplied with fuel for the winter. A set of fuel tankers just arrived at Johnstown. Couple them and bring them to Altoona. You will have to drop some at AR Track 0. You will have many junctions to change manually. Once arrived at AR Track 0, you will have to reverse into AR Track 0 to deliver the fuel tanks.

Have a safe journey.

-Freight 8512

-Difficulty: Medium

-Duration: 135 minutes

-Train: EMD GP7 Pennsy

-Date: 18/08/1959

-Weather: Clear

-You have to transport some gravel from Cresson to Altoona. Once you have delivered the gravel, another task will be asked to you. At Altoona you will have to find your way through the park. Once your train is set, you will have to find your way out of Altoona park again. You will have to pass by Altoona Wwd Freight (orange line) to get out of the park and you will have to be on the second line from the right. If you don't pass by Altoona Wwd Freight, you will not be able to continue the scenario. You will have many junctions to change manually.

Have a safe journey.

-Freight 8581

-Difficulty: Hard

-Duration: 150 minutes

-Train: EMD GP7 Pennsy

-Date: 15/11/1958

-Weather: Overcast Rain

-Today you will drive the "Freight 8581" train. You will start at Johnstown. You will first have to couple a set of gravel freight at Picardi Gravel and transport it to Cresson. Another task will be asked to you once you have finished the first one. To leave Cresson West 2, you have to pass by Cresson West 1. You will have many junctions to change manually. When you leave Johnstown, you must be on the second track from the right. If you are not on that track, you will not be able to continue the scenario. Think about doing backups from time to time.

Have a safe journey.

-Freight 8555

-Difficulty: Hard

-Duration: 140 minutes

-Train: EMD GP7 Pennsy

-Date: 18/07/1959

-Weather: Clear

-Today you will drive the "Fright 8555" train. You will start at Gallitzin. You will first have to pick up some freight cars and transport them at Altoona. You will have many junctions to change manually. If you follow the instructions you will find your way without any problem.

Have a safe journey.



www.roussillonaerosimulation.com